

Victory of Life

# ViOL

## How will SYLFIRM X technology enhance your business?

Your patients will love the results they get from the cutting edge Sylfirm X RF microneedling system with **dual wave tech**, and you will love the multiple revenue-generating opportunities it will bring to your practice.

Sylfirm X is the latest innovation in RP (repeated ultra-short pulse) microneedling technology that reacts to **ONLY** abnormal blood vessels and tissue to selectively treat increased pigmentation and vascular lesions—it is the only RF microneedling device designed to safely treat neovascularities including hard-to-treat conditions like rosacea and melasma. This latest generation system is clinically proven to address safely and effectively several issues, including wrinkles, redness, acne scars, minimizing pores and improving the overall look and tone of the skin.



# SYLFIRM X

EMERGING DUAL WAVE RF MICRO NEEDLING SYSTEM

ULTIMATE EDITION

## **DUAL WAVE RF MICRO NEEDLING SYSTEM**

CONTINUOUS WAVE (CW) & PULSED WAVE (PW)

SYLFIRM X Ultimate Edition with its 8 different CW/PW modes has proven its effectiveness and safety through numerous clinical studies and experiments.

## **BIPOLAR NON-INSULATED ELECTRODE SYSTEM**

SYLFIRM X adopted bipolar non-insulated micro needle electrodes to cover all dermal layers with uniform electric field and maximize the treatment result specifically for the melasma, rosacea, and PIH during the Pulsed Wave (PW) modes, including skin tightening and other benefits during the Continuous Wave (CW) modes.

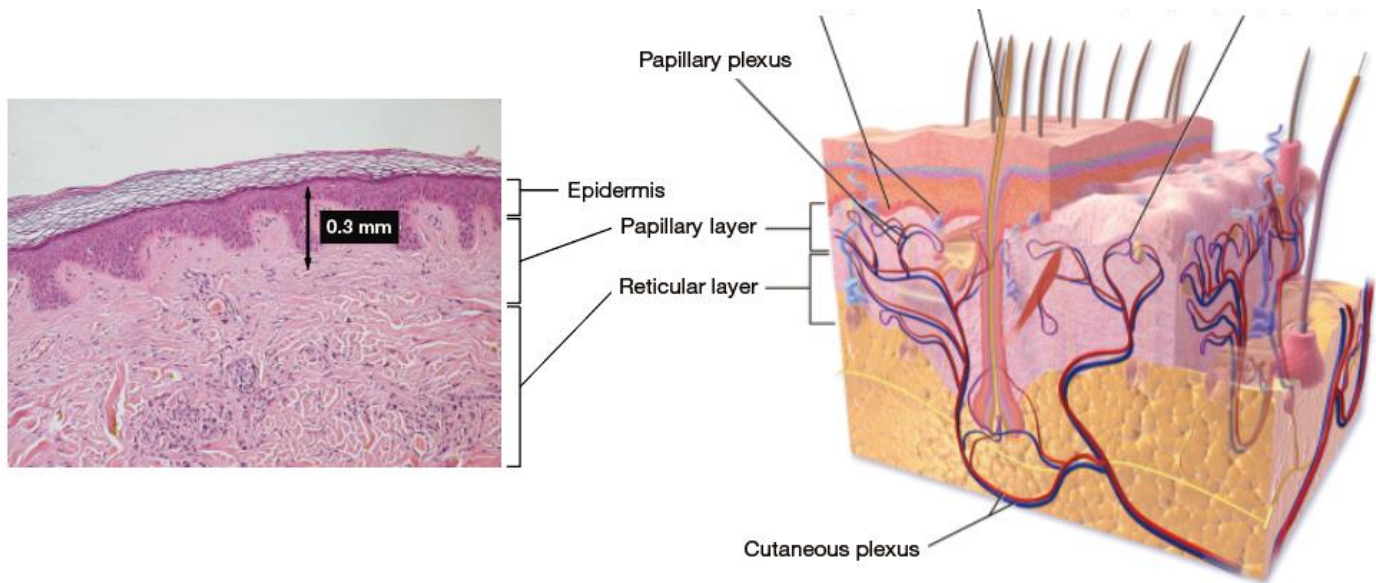
## **ROBOTIC PRODUCTION SYSTEM**

The Micro needles are precisely produced by the robotic system, which brings evenly leveled electrodes to penetrate an accurate target depth during the treatment.



## At 300 $\mu$ m, Papillary Dermis

FDA Cleared Pulsed Wave (PW) and Continuous Wave (CW) Radio Frequency Micro Needling device. Dual wave is subdivided into 8 different modes, which can be customized to individual patients, considering the indications, skin conditions, to provide a delicate treatment.



## Optimal Skin Rejuvenating Depth

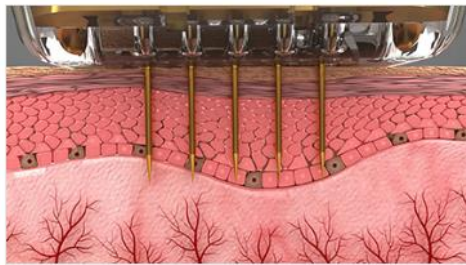
Papillary Dermis contains collagen factors, especially Type III collagen. Compared with older adults, the distribution of Type III collagen in the fetus's skin is higher than that of Type I. Also Type III collagen is present more in papillary dermis than reticular dermis. The density of type III collagen increased after 300 $\mu$ m targeted treatment with Sylfirm X.

## Regulation of Hyperactive Melanocytes

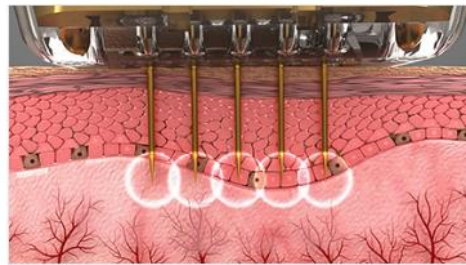
The senescent fibroblasts, which stimulate melanogenesis, are more distributed in the melasma lesion than in the perilesional area, and more in the papillary dermis than in the reticular dermis. 300  $\mu$ m target procedure improves senescent fibroblasts that promote melanin production, strengthens the basement membrane, and helps improve melasma.



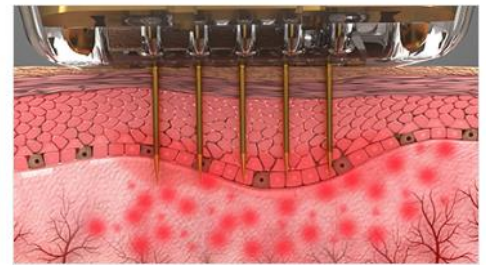
# Mechanisms of Sylfirm X



Electrodes inserted into the dermal tissue



Delivers RF Energy



Create Thermal Coagulation Zone

## Dual Wave RF Microneedling System

### PULSED WAVE (PW) & CONTINUOUS WAVE (CW)

FDA Cleared Pulsed Wave (PW) and Continuous Wave (CW) Radio Frequency Micro Needling device featuring 300 Micron depth targeting both skin laxity. Sylfirm X with its 8 different PW/CW modes has proven its effectiveness and safety through 25+ clinical studies and experiments.

- Minimally Invasive
- Short Treatment Time
- Minimal Downtime
- Safe & Comfortable
- Immediate Results

## Two Type X Mode

Cell Mode

Single Long Pulse



CW(Continuous Wave) Mode

rePair Mode

Multiple Short Pulses



PW(Pulsed Wave) Mode



FDA Cleared  
SYLFIRM X Tips

# SYLFIRM<sup>X</sup>

Difference of 300 Micron



X-25



XE-25



XA-25



XW-18



5\*5(25Pin), 2mm

X-25 Tip (Full Face)



5\*5(25Pin), 2mm

XE-25 Tip (Full Face)



5\*5(25Pin), 1.5mm

XA-25 Tip (Intensive)



6\*3(18Pin), 1.5mm

XW-18 Tip (Narrow Area)

# SYLFIRM<sup>X</sup>

Minimal Downtime  
Little to No Pain

Improves:

Skin Laxity

Vascular Pigmentation Minimizes

Appearance of Scars

Skin Texture & Tone

Skin Rejuvenation

